

Economic burden of comorbidities in patients with psoriasis in the United States

Jashin Wu, Manasi Suryavanshi, David Davidson, Vardhaman Patel, Anuj Jain, Lauren Seigel



Summary:



Patients with **PsO** experience a **higher economic burden** than the general population due to comorbidities



Study Design:

Retrospective cohort study • HCRU and costs • IBM® MarketScan® (now Merative™) Commercial and Medicare Databases

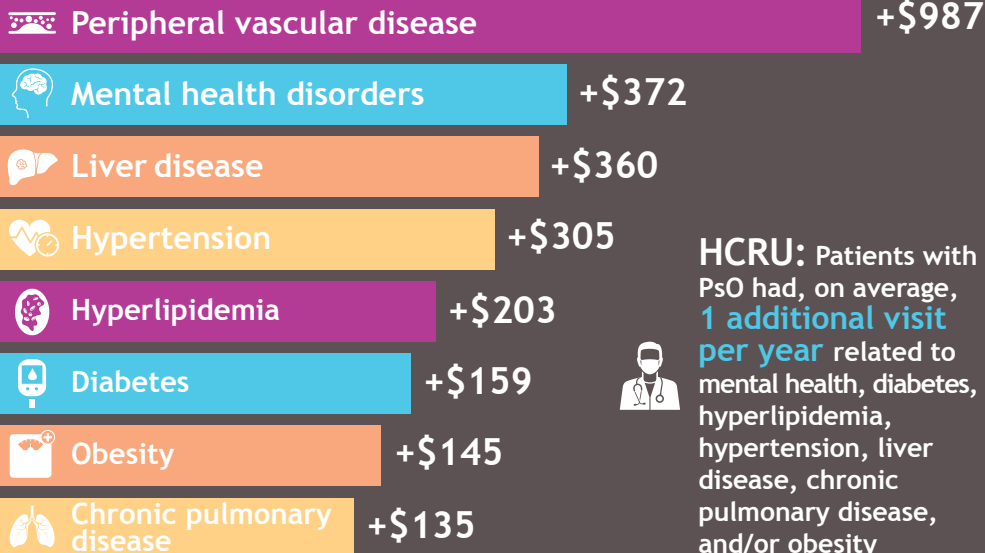


Comparison:



Patients with moderate to severe **PsO vs general population**

Outcomes: Additional cost of comorbidities (compared with the general population)*



*Per patient per month 2020 USD (all $P < 0.01$).
HCRU, healthcare resource utilization; PsO, psoriasis.

The graphical abstract represents the opinions of the authors. For a full list of declarations, including funding and author disclosure statements, and copyright information, please see the full text online.