

Real-world treatment patterns and outcomes among patients with locally advanced or metastatic basal cell carcinoma following first-line hedgehog inhibitor discontinuation

Lance Cowey, Chieh-I Chen, Kathleen M. Aguilar, Kalatu Davies, Patrick R. LaFontaine, Matthew G. Fury, Timothy Bowler, Asieh Golozar, Jessica J. Jalbert



Until recently, patients discontinuing first-line (1L) hedgehog inhibitors (HHIs) for basal cell carcinoma (BCC) had few subsequent treatment options.



STUDY OBJECTIVE

To evaluate the treatment journey and outcomes of patients with BCC who discontinue 1L HHI treatment in a real-world setting.

STUDY DESIGN

Retrospective cohort study of adult patients with BCC in The US Oncology Network who discontinued 1L HHI treatment between January 1, 2012, and November 1, 2019, with follow-up until May 2020. Patients who met the inclusion criteria were stratified to two treatment cohorts.



BCC diagnosis, n=3884

Excluded, n=3865

Baseline characteristics†

Two cohorts were identified: patients who initiated a second-line (2L) treatment (2L initiators), and those with 1L progression/toxicity without pathology-confirmed complete response who did not initiate 2L treatment (2L non-initiators). Patient demographics, treatment characteristics and outcomes are reported for each cohort.

	2L non-initiators	2L initiators
Median age, years	80.2	68.7
Female, n (%)	3 (20.0)	4 (100)
ECOG 0/1, n (%)‡§	10 (83.3)	3 (100)
ECOG ≥2, n (%)‡§	2 (16.7)	0



2L non-initiators, n=15



2L initiators, n=4

RESULTS

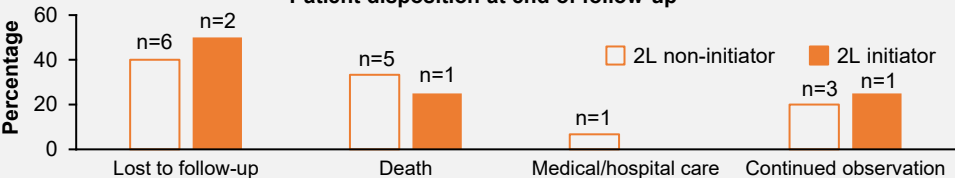
Treatment history

	2L non-initiators	2L initiators
✚ Vismodegib monotherapy 1L, n (%)	15 (100)	4 (100)
📅 Median 1L tx duration, months (range)	6.8 (1.9, 20.6)	8.6 (6.8, 42.2)
🕒 Median time from initial BCC dx to 1L tx, months (range)	2.1 (0.0, 80.5)	3.5 (0.0, 77.1)
📋 Reason for HHI 1L tx discontinuation, n (%)		
Toxicity	14 (93.3)	0
Progression	1 (6.7)	4 (100.0)
📄 2L initiator 2L treatments, n (%):		
Carboplatin + paclitaxel, 1 (25.0)		Nivolumab, 1 (25.0)
Cemiplimab, 1 (25.0)		Pembrolizumab, 1 (25.0)

Outcomes in patients with la/mBCC who discontinued 1L HHI

	2L non-initiators	2L initiators
Median follow-up duration		
Months (range)	9.7 (3.2, 42.2)	6.3 (0.7, 61.1)

Patient disposition at end of follow-up



CONCLUSIONS



Following 1L HHI discontinuation, lack of standardized care and suboptimal outcomes were observed, including limited receipt of 2L treatment. Further studies are necessary to evaluate the impact of newer BCC treatment options.



†Missing patient data reported on a denominator consisting of patients with non-missing data for that variable. ‡Calculated from 11 non-initiators and 3 initiators (data missing from 4 non-initiators and 1 initiator). §Calculated from 12 non-initiators and 3 initiators (data missing from 3 non-initiators and 1 initiator). BCC, basal cell carcinoma; dx, diagnosis; ECOG, Eastern Cooperative Oncology Group; HHI, hedgehog inhibitor; laBCC, locally advanced BCC; mBCC, metastatic BCC; 1L, first line; 2L, second line; tx, treatment.