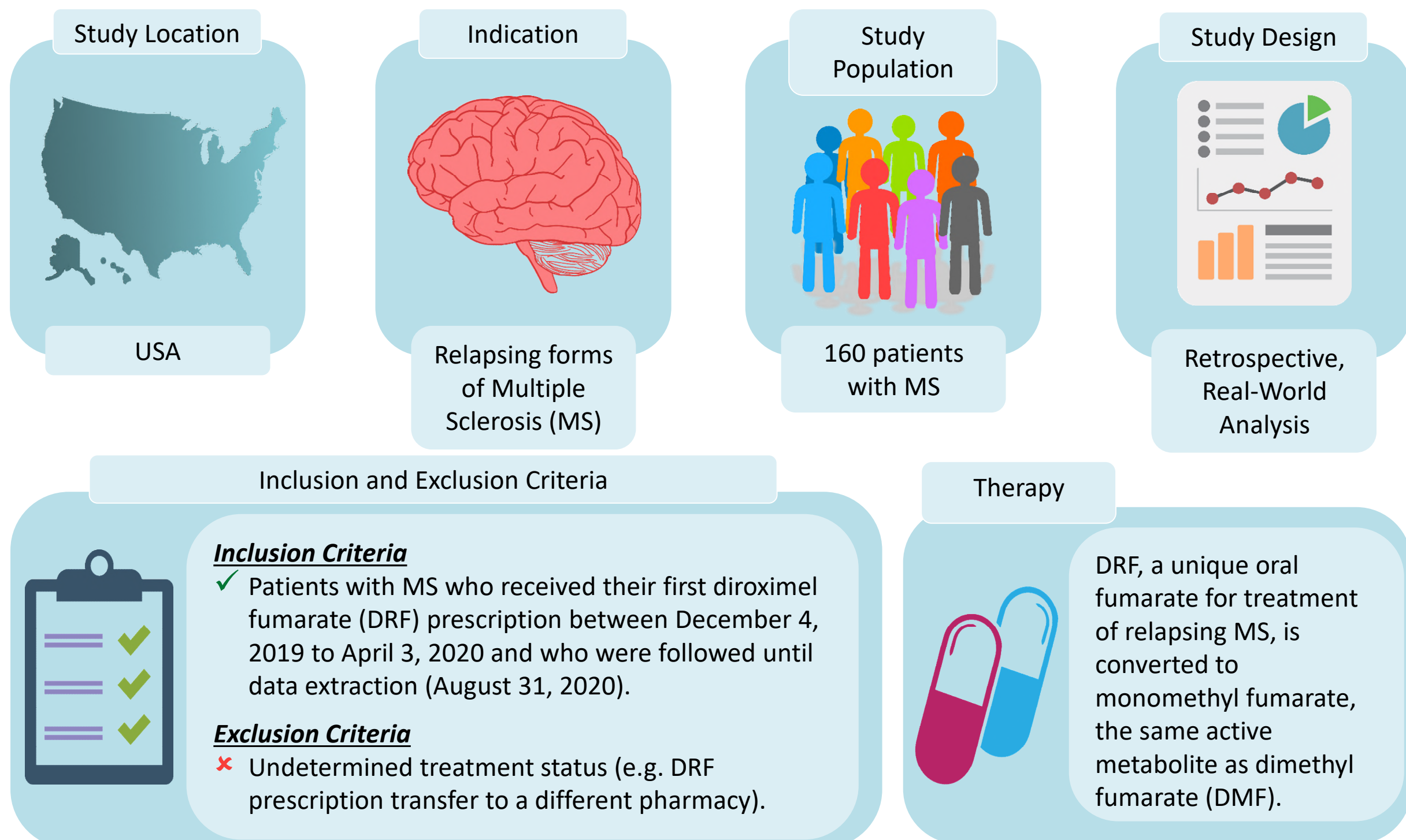
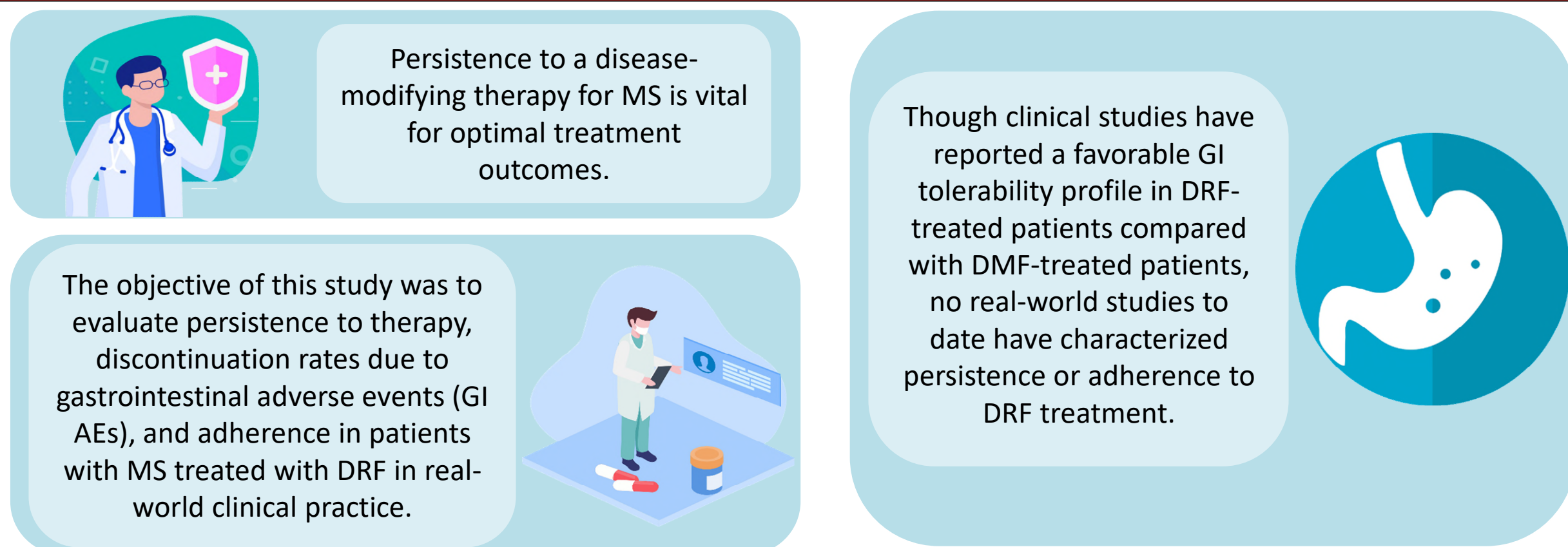


Multiple Sclerosis Patients Treated With Diroximel Fumarate in the Real-World Setting Have High Rates of Persistence and Adherence

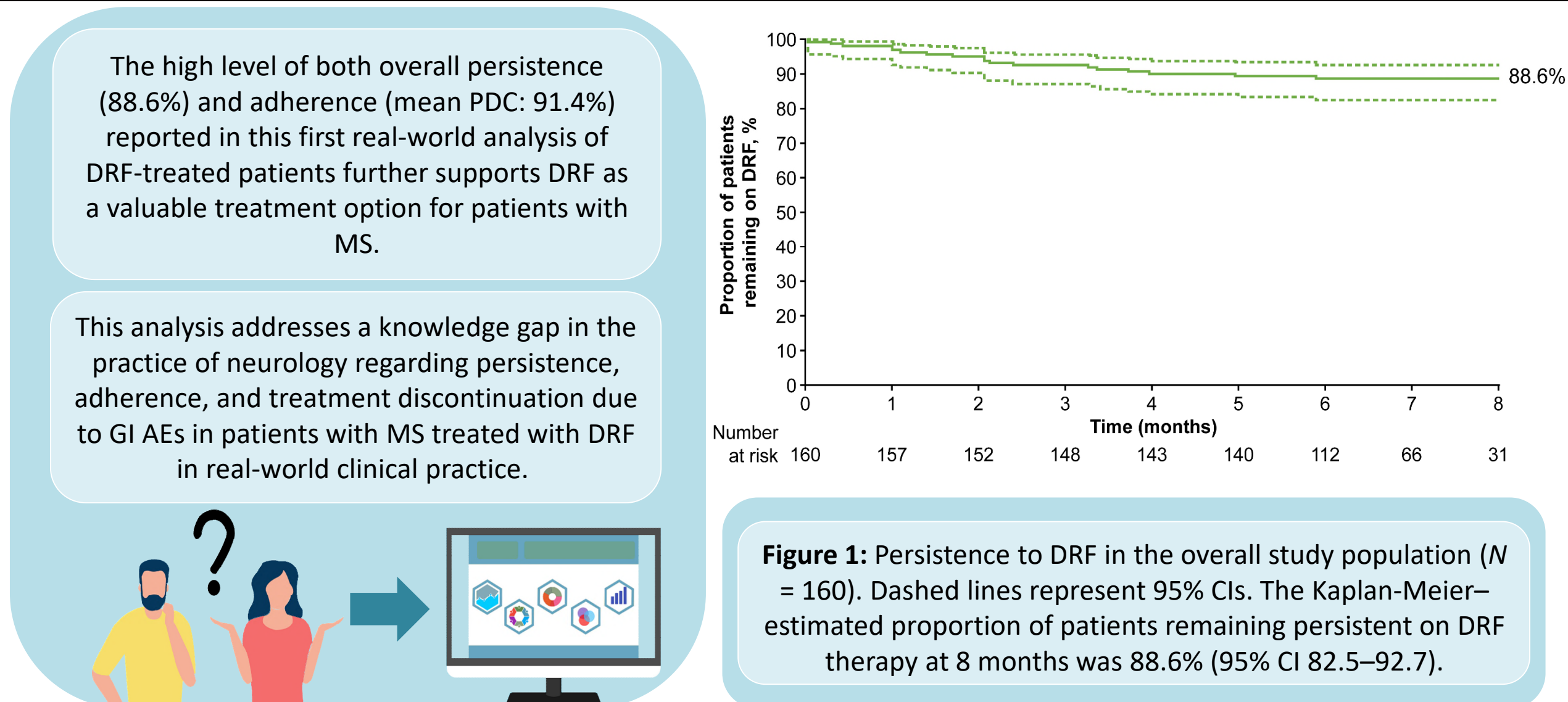
Liseno, J., Lager, B., Miller, C. et al. Neurol Ther (2021). <https://doi.org/10.1007/s40120-021-00242-7>



Why carry out this study?



What was learned from the study?



Abbreviations:

MS = Multiple Sclerosis; DRF = Diroximel Fumarate; DMF = Dimethyl Fumarate; GI = Gastrointestinal; AE = Adverse events; PDC = Proportion of days covered; CI = Confidence interval